

Above work is a joint effort of following partners.

Alibaba Foundation
Administration of Qinghai Sanjiangyuan National Nature Reserve
Administration of Gansu Baishuijiang National Nature Reserve
Administration of Sichuan Wanglang National Nature Reserve
Administration of Sichuan Wolong National Nature Reserve
Administration of Sichuan Tangjiahe National Nature Reserve
Administration of Sichuan Mt. Gongga National Nature Reserve
Administration of Sichuan Baishuihe National Nature Reserve
Administration of Sichuan Gexigou National Nature Reserve
Administration of Sichuan Ma'anshan Provincial Nature Reserve
Administration of Sichuan Shengguozhuang Provincial Nature Reserve
Administration of Yunnan Mt. Gaoligong Nature Reserve
Administration of Yunnan Mt. Huanglian Nature Reserve
Administration of Yunnan Yunlong Tianchi Nature Reserve
Artron Color Printing Co., Ltd.
Beijing Shan Shui Partner Culture Development Co., Ltd.
Blue Moon Fund
Brady Foundation
BMW China / BMW Warm-Heart Fund
Bridgestone (China) Investment Co., Ltd.
Conservation International
Caixin Media Co., Ltd.
Critical Ecosystem Partnership Fund (CEPF)
China Green Foundation
China Youth Development Foundation
Chengdu Institute of Biology, CAS
Chinese Academy of Agricultural Sciences Apiculture Research Institute
Chinese Academy of Social Sciences
China Agricultural University
Center for Studies of Bama Mountain Culture, Yunnan Provincial Academy of Social Sciences
Center for Studies of Chinese Southwest' s Borderland Ethnic Minorities of Yunnan University
Embassy of Canada in China / Canada Fund
Embassy of France in China
Esquel Yang Yuanlong Education Foundation
French Development Agency Beijing Office
Ford Motor China
FAW-Volkswagen Audi
Forestry Bureau of Datong County, Qinghai
Forestry Bureau of Liangshan Prefecture, Sichuan
Forestry Bureaus of Lixian County, Maoxian County, Qingchuan County, Pingwu County, Beichuan County, Leibo County, Yuexi County, Ganluo County, Meigu County, Zhaojue County, Sichuan Government of Haidian District, Beijing
Government and CPC Committee of Yulshul Prefecture
Government and CPC Committee of Yulshul County
Gansu Forestry Department
Government of Haxiu Township, Yulshul County, Qinghai
Government of Suojia Township, Zhidol County, Qinghai
George Schaller
Haiwen & Partners
HSBC Bank China
Huayi Brothers Foundation
Kunming Institute of Zoology, CAS
Lanzhou University Center for Community and Biodiversity
Liz Claiborne-Art Ortenberg Foundation
L'Oreal China
Legislative Affairs Office of Qinghai Government

MacArthur Foundation
National Science Foundation, U.S./Michigan State University
Marjorie Yang
National Geographic Society Air and Water Conservation Fund
Novartis
Narada Foundation
National Plateau Wetlands Research Center
Nyanpo Yutze Ecological Protection Association
One Foundation
Panthera
Peking University
Peking University for Nature and Society
Qinghai Forestry Department
Qinghai Environmental Protection Department
Qinghai Provincial CPC School
Qinghai Development and Reform Commission, Sanjiangyuan Office
Qinghai Normal University
Qinghai Forestry Inventory and Planning Institute
Rockefeller Brothers Fund
Snow Land Great Rivers Environmental Protection Association
Snow Leopard Trust
Symantec Software Beijing Co., Ltd
Shanghai Metersbonwe Fashion Co., Ltd.
SEE Foundation
State Environmental Protection Department
State Forestry Department
Sichuan Forestry Department
Sichuan Apiculture Administration
Sichuan Dadu River Afforestation Bureau
Sichuan Mamize Provincial Nature Reserve
Sichuan Yele Provincial Nature Reserve
Sichuan Baicaopo Provincial Nature Reserve
Shaanxi Changqing National Nature Reserve
Sichuan Provincial Academy of Social Sciences
Sichuan Forestry Inventory and Planning Institute
Sichuan Academy of Forestry
Sichuan University
Sichuan Pingwu Guanba Apiculture Co-operative
Shi Yuzhu and Giant Investment Group
Travel Channel Media Co., Ltd.
The Nature Conservancy China (TNC)
The Global Environment Facility Small Grants Project (GEF-SGP)
Tianjin TV
Tencent Charity Foundation
Taobao (China) Software Co., Ltd
UNESCO
Wu Huimin and Jennifer Lu
Weng Ling
Wang Jing and Toread Outdoor Products Co., Ltd.
Xu Jintao
Ya'an World Heritage Management Office
Ya'an Villagers' Photographic Association
Yunnan Forestry Department
Yunnan Kawagebo Culture Society

A Chinese NGO founded in 2007, Shan Shui Conservation Center focuses its work on the remaining beautiful but fragile ecosystems – Sanjiangyuan, Southwestern Mountains, and the Lancang River Basin, spanning the provinces of Qinghai, Sichuan, Gansu, Shaanxi, and Yunnan, which encompass snow leopard and giant panda habitats. Together with our partners – communities, academic institutions, governments, companies, media—we support local initiatives which can offer solutions to defend the land we depend on.

Our vision: eco-equality, a sustainable balance between nature and humans, traditional and modern culture, and the bottom-up versus top-down decisions.
Our mission: to promote ecological value based on science and cultural significance so as to empower nature guardians.

Accreditations and Awards

Rated AAAAA in the accreditation of outstanding NGOs by the Ministry of Civil Affairs; and named "Outstanding NGO" in four consecutive years by the Civil Affairs Bureau of Haidian District, Beijing.

The "How Forests Relieve Thirst" Project won third Ford's CEGC Prize – Leadership in Conservation Campaigns.

"Through Their Eyes" production "Yak Dune" won the Best Director Award in the 2nd One Foundation Video Festival and was nominated in the Best Featured Documentary Film and Green China categories of the 2nd Phoenix Video Documentary Awards.

Background Info

By the end of 2013, Shan Shui comprised 33 full-time staff specialized in various professional fields, including conservation biology, biology, environment and resource management, anthropology, and sustainable development. They are experienced in NGO and corporate management domestically as well as internationally.

Shan Shui also works with 25 long-term volunteers and consultants with expertise in different fields such as management, media, environmentalism, ecology, sociology, anthropology, and community livelihood development.

Contact us

Beijing: Conservation Biology Building, College of Life Sciences, Peking University
Tel: +86-10-62761034
Fax: +86-10-62761035
Xining: 3-502, Hua Yuan Da Sha Xiao Qu, Chengdong District, Xining
Tel: 0971-6313625
Chengdu: 7-1001, Shanghai Dongyun, 64 Jingjusi Road, Jinjiang District, Chengdu
Tel: 028-87017337

Email: contact@shanshui.org
Web: www.shanshui.org
Sina Weibo: @山水自然保护中心



Shan Shui Conservation Center 2013 Annual Report

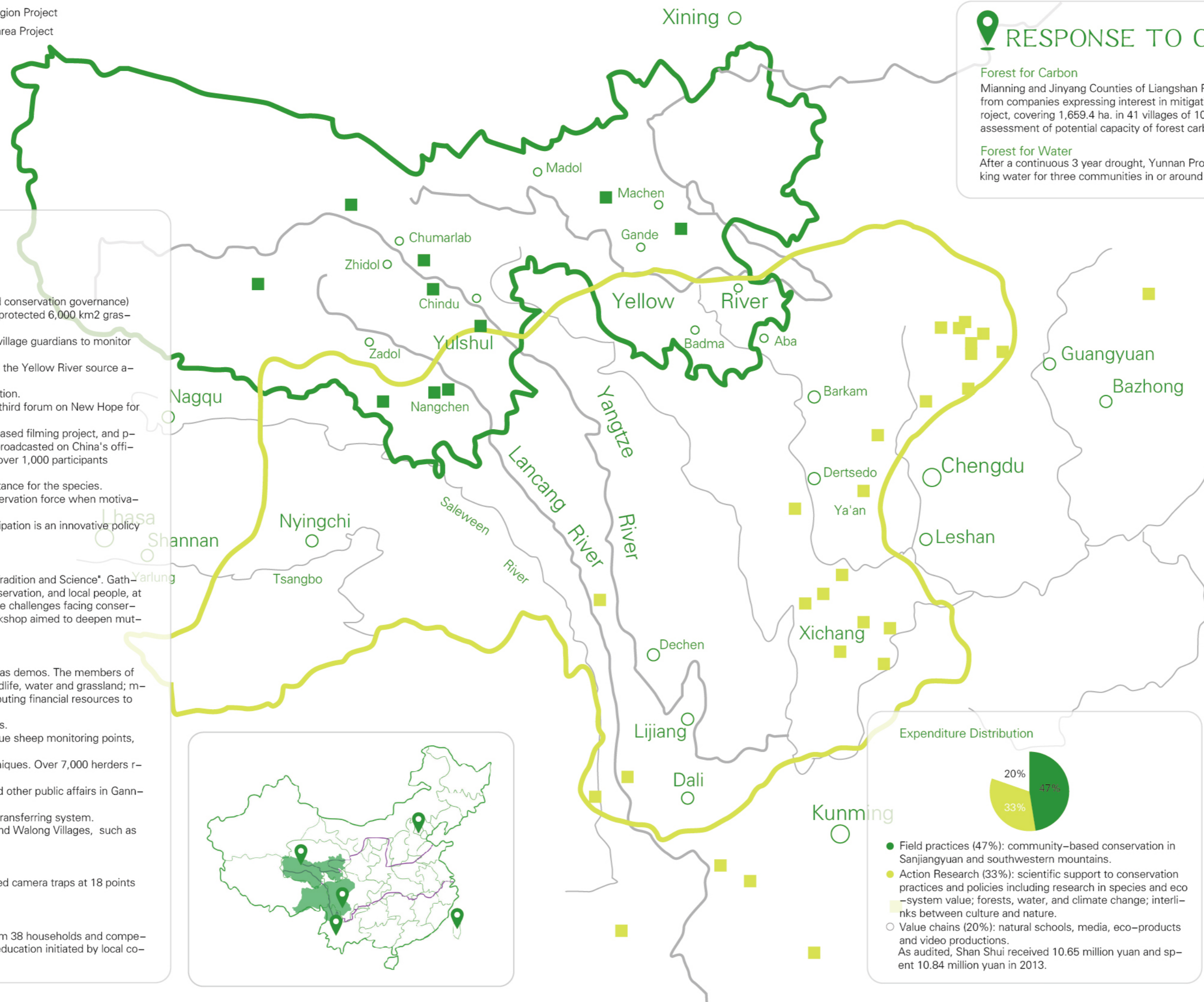
China's ecosystems, the source of clean air and clean water,
The reason why we live healthily to this day and call this land our home,
Are endangered due to our own unchecked growth.
What future do we want? How do we get there?
Shan Shui is a small team of young people with tireless aspirations.
Scientific and cultural perspectives inform their actions
Which involve collaboration with local communities, governments and the public.
This all occurs on the frontline of the Chinese conservation effort
To find answers to these questions.





Shan Shui Conservation Center at 2013 Annual Retreat in Dali

- Sanjiangyuan Region Project
- The southwest area Project



SANJIANGYUAN

the source of the Yellow, Yangtze and Mekong Rivers

HIGHLIGHTS

Supported establishment of 6 Village Resource Centers (VRC, villager-initiated conservation governance) and grassroot NGOs, trained 200 village guardians for wildlife monitoring, and protected 6,000 km² grassland.

Installed 114 infrared-camera traps over 1300 km² snow leopard habitats for village guardians to monitor over 15 wildlife species (i.e. snow leopards and brown bears).

Completed the second year of Rapid Assessment Program for Sanjiangyuan in the Yellow River source and documented 555 species.

Published one research paper and one policy report on snow leopard conservation.

Proposed a draft of Sanjiangyuan Conservation Regulations and organized the third forum on New Hope for Sanjiangyuan: "the Conservation Legislations".

Produced 13 films by local villagers by "Through Their Eyes", the community-based filming project, and provided training to 32 participants in the region; Some of the films have been broadcasted on China's official TV channels. Held the first "Through Their Eyes Forum" in Kunming with over 1,000 participants

Our work has revealed that Sanjiangyuan has the largest continuous snow leopard habitat, of global importance for the species. Local communities in Sanjiangyuan have proven to be the most effective conservation force when motivated by their traditional cultural values and empowered by the government.

The conservation approach based on scientific evidence and community participation is an innovative policy model.

Nyanpo Yutse

Carried out the "Nyanpo Yutse Conservation Workshop: A Dialogue between Tradition and Science". Gathered scholars and practitioners in science, philosophy, traditional cultures, conservation, and local people, at the foot of the Nyanpo Yutse Sacred Mountain in Golok, Qinghai, to discuss the challenges facing conservation on the plateau such as littering, releasing animals, and grazing. The workshop aimed to deepen mutual understandings and translate into action in conservation.

Haxiu Township of Yushu County

Set up four Village Resource Centers and one township-based service center as demos. The members of VRC are elected by villagers to be responsible for patrolling and monitoring wildlife, water and grassland; managing natural resource use and the environment such as garbage, and distributing financial resources to support community-based conservation.

Established 12 grassland plots to study the changes in grassland and its causes.

Set up 40 infrared camera traps, trained 14 village guardians, established 49 blue sheep monitoring points, and identified 6-9 snow leopard individuals within 300 km² of Yunta Village.

Prepared a brochure on *caterpillar fungus* (CF) and sustainable harvesting techniques. Over 7,000 herders received the information.

Established the Village Conservation Fund to support education, healthcare and other public affairs in Ganning Village, in exchange for the villagers' conservation efforts.

Built 10 garbage chambers and developed waste classification and treatment/transferring system.

Experimented bear-damage prevention devices for 15 households in Gangri and Walong Villages, such as solar-powered electric fences.

Suojia Township of Zhiduo County

Identified 41 individual snow leopards in an area of 1,000 km² where 33 infrared camera traps at 18 points captured 24 species and 4,827 images of snow leopards.

Nangqian County

Established insurance for snow leopard damage which covered 3,024 yaks from 38 households and compensated against 40 incidences of snow leopard or wolf attacks. Environmental education initiated by local communities reached over 10,000 people.



RESPONSE TO CLIMATE CHANGE

Forest for Carbon

Mianning and Jinyang Counties of Liangshan Prefecture, Sichuan, regenerated a total of 1,600 mu (107 ha) forests within panda habitats, a contribution from companies expressing interest in mitigating their carbon emissions. Datong County, Qinghai, launched the Huangshui River Forest Carbon Sink Project, covering 1,659.4 ha. in 41 villages of 10 townships/towns for forest regeneration. Qinghai Province completed the "Green Map of Qinghai", an assessment of potential capacity of forest carbon sequestration for priority setting in Qinghai regional planning.

Forest for Water

After a continuous 3 year drought, Yunnan Province demonstrated ecosystem-based adaptations to extreme climate conditions by providing clean drinking water for three communities in or around Huanglianshan, Gaoligong and Yunlong nature reserves, which benefitted about 4,095 people.

the global biodiversity hotspot

SOUTHWESTERN MOUNTAINS

HIGHLIGHTS

Took 200 images of the giant panda and other endangered species with infrared camera traps within the community-based monitoring project.

Supported 2 villager-initiated conservation governance groups; trained 300 community members about collective forest conservation and bee keeping.

Promoted provincial policies for the village governance for collective non-commercial forest conservation in Changqing of Shaanxi, Pingwu and Lixian of Sichuan, and Baishuijiang of Gansu, and resulted in 1,200 km² of forests coming under protection by communities. Similar approach was promoted to manage 7,000 km² collective forests; leveraged at least 174 million yuan of the National Eco-compensation Fund for collective non-commercial forests; provided training to over 250 forest guards from 81 villages in Lixian. Produced 1240.5 kilos of the "BeePANDA Honey" and generated sales of 205,000 yuan for the year. Under this project, *Apis cerana*, or the Asiatic honey bee, pollinated 194 species of plants and supported the livelihood and conservation efforts of 1,194 local Guardians.

Panda Nature Reserves

Wanglang Nature Reserve launched the first "Shan Shui Nature School" to promote nature's value and its benefits to society, especially city dwellers. Baishuijiang Nature Reserve captured the first wild panda images since the 2008 Wenchuan Earthquake with infrared-camera traps. The news was reported by CCTV (China Central Television). Using a 20,000 yuan payment from BeePANDA Honey Sales, Changqing Nature Reserve set up a conservation fund to support research, community co-management and environmental education.

BUILDING CONSERVATION CAPACITY

Beijing

Supported five high-school student teams in completing their environmental projects following a country-wide competition which involved prominent Chinese and international scholars, a side event of SCCS-Beijing - Student Conference on Conservation Science.

Taiwan

Led a 20 day study tour to Taiwan on sustainable development and social innovation with 25 fellows from LEAD and Beyond, a leadership training program for sustainability in collaboration with Fuping Development Institute in its fourth year.

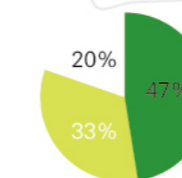
Lancang/Mekong River Basin

Consulted over 80 stakeholders and drafted a strategic document, The Ecosystem Profile, in preparation for a small-grant program to support civil society's conservation capacity and initiative in Lancang River Basin.

Shan Shui Nature School

Organized three volunteer activities to assist scientific projects and four national/international study tours to promote education about nature.

Expenditure Distribution



- Field practices (47%): community-based conservation in Sanjiangyuan and southwestern mountains.
- Action Research (33%): scientific support to conservation practices and policies including research in species and ecosystem value; forests, water, and climate change; interlinks between culture and nature.
- Value chains (20%): natural schools, media, eco-products and video productions. As audited, Shan Shui received 10.65 million yuan and spent 10.84 million yuan in 2013.